

DKMU OISTAR GUIDE

DEATH TO THE IMAGE!



HAIL THE NEW FLESH!

THE WALRUS WANTS YOU



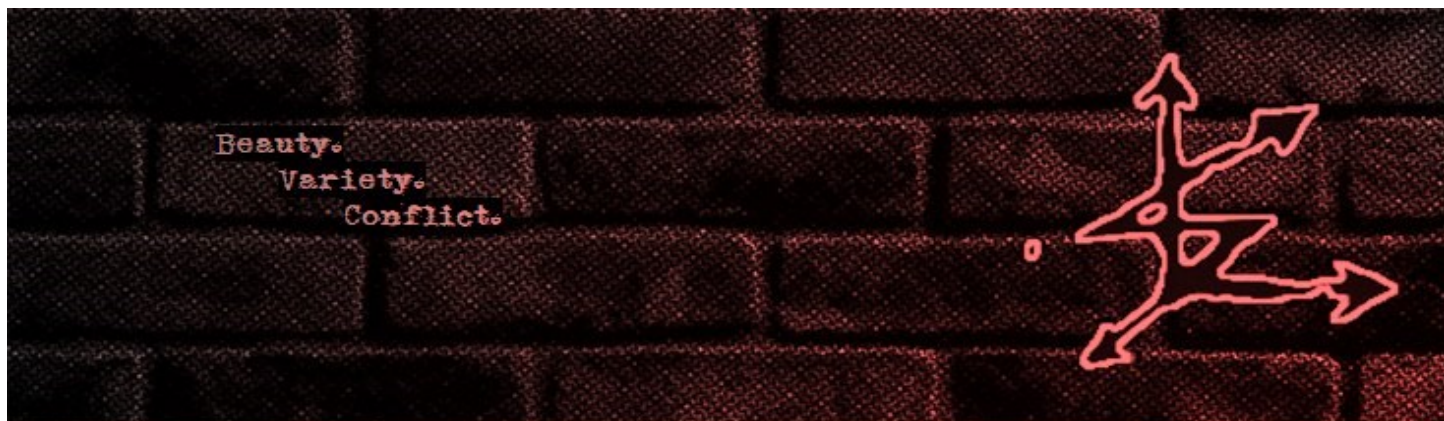
FOR THE ASSAULT AGAINST REALITY

JOIN THE RESISTANCE!

WWW.DKMU.ORG

--TABLE OF CONTENTS--

An Introduction to DKMU	page 3
FAQ.	page 4
A Brief History of DKMU	page 7
Intermission	page 9
The Godforms	page 10
LS: The Original MU	page 11
LS vs Ellis	page 12
Symbols & Catchphrases	page 13
Ongoing DKMU Operations	page 14
DKMU Propaganda	page 15
please note: all of the images contain hyperlinks to their file on www.DKMU.org	
Archive & Links	page 16



--INTRODUCTION TO DKMU--

The DKMU is a loose knit group of free thinkers that is bound together by its fierce camaraderie. At its heart is the work done with the LS (Linking Sigil, or ELLIS). In the past it has held meet ups that have brought members together from great distances, solidifying the results of work that occurs both online and in real life. The DKMU was originally two groups- Domus Kaotica, and the Marauder Underground. It began as an autonomous collective of artists and occultists who utilized guerilla tactics to spread the Assault on Reality. At this time, these distinctions no longer matter, and the DKMU as a whole utilizes techniques from both groups. The Assault on Reality and the LS are still the predominant work of this group, supplemented by a new paradigm made up of a series of godforms created by its members. New members, called oistars, are always welcome.



--F.A.Q.--

- **What is DKMU, and what does it do?**

Please read the introduction.

- **When and how did DKMU get founded?**

The answer is in the DKMU History, on page 6.

- **Are you guys organized criminals?**

We are an organization of reality saboteurs.

- **Is DKMU affiliated with any other groups?**

In the past DKMU has been affiliated with the [Infinity Network](#), and is currently affiliated with the [A.A.O.](#)

- **How is DKMU organized?**

The DKMU was previously organized by degree levels. This was discontinued in the revival of the group, as it had led to contention among the ranks, and a rumor of an inner-circle that was truly in charge of the otherwise autonomous group.

- **How many members of DKMU are there?**

It's hard to say, as there are members across the world.

- **Are there members who aren't really members?**

Yes.

- **What is DKMU membership like?**

That's entirely up to you. Not all members work with LS, or the godforms. For members who truly immerse themselves in the material and techniques, a diving into or riding the 156/663 current takes place. This can be visualized as a unique energy wave or signature that is associated with the group egregores, operations and techniques. By riding this efficiently, the practitioner is able to tap the current as a source of power in more profound ways than someone on the sidelines who is merely experimenting with some of the group's materials. Stories of self-initiation, immersion and participation are common for those who really begin to work with Ellis or the current in general.

- What do I get from membership?

The satisfaction of claiming you belong to the elite dark chaos group, DKMU. You decide on your own level of connection and involvement.

- What is the direct advantage of doing anything or participating?

Self gratification. Any magickal and ritual work performed within the 156/663 current, whether alone or with others, strengthens both the current, the practitioner, and their relationship to the current. By actively engaging with these energies, they open up more to reveal their inner workings. The entire effort grows by result, as does the opportunity to spread and live within a more magickal state of being. As those who frequently work with Ellis often say, you tend to get back what you put out.

- How do I participate?

Work with the godforms, post in the [forums](#) or the [facebook group](#), and lurk in the IRC with everyone else.

- Why khaos instead of chaos?

Khaos, or $\chi\acute{\alpha}\omicron\varsigma$ (pronounced as one might say "cows") describes the Greek concept which, unlike the modern English use of chaos (extant disorder and randomness; eclecticism) relates to cosmogony. In this sense, Khaos is the primordial state or abyss composed of all the elements before they were separated. From Khaos, the Kosmos (the Universe) and the Gods were created. The Greeks were not the only culture to describe a creation myth like this, and parallels may be found in Chinese, Norse, Sumerian and Jewish cosmogony, to name but a few.

The DKMU prefers this spelling (khaos) over chaos for these reasons, as well as making a literary distinction between concepts which denote mundane disorder and randomness from the more mystic, mythic and profound ideas surrounding Khaos as the first cosmic state, sacred void, etc.

- Is there a DKMU bible?

A book called the DKMU Bible is currently under construction. However, this title is more of a joke, and it will not focus on authoritative dogma .

- How do I spend money on books?

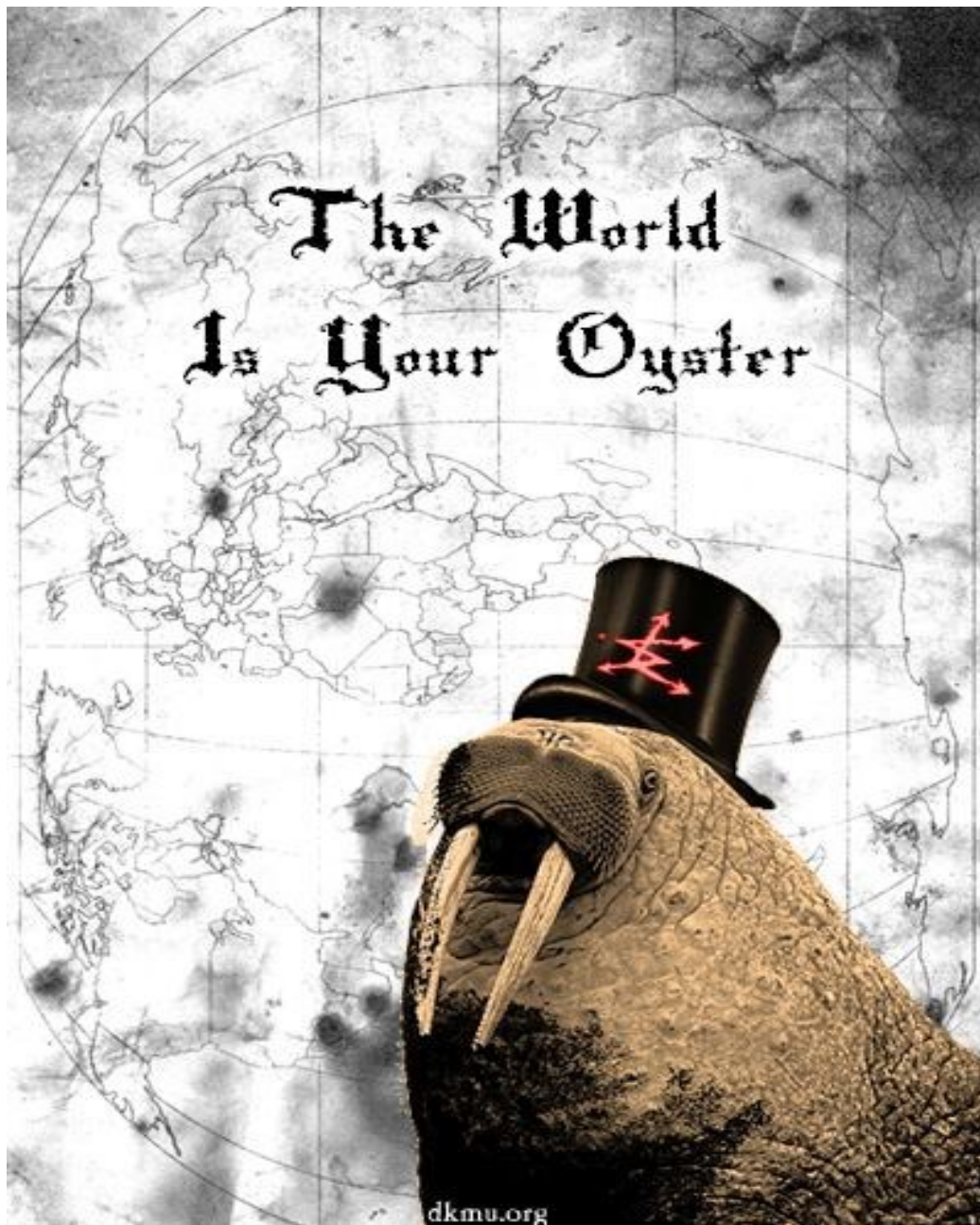
Check out LULU, and Amazon. Merchandise can be found at [cafepress](http://cafepress.com).

- How do I contact DKMU?

Post in the forum. Message members. Visit the chat room.

- What is the IRC for DKMU?

The IRC chat for DKMU can be found on the server irc.hypersigil.org in #domus. See you there!



-- A Brief History of DKMU--

In 2004, Silenced and Arjil began a thread on the former occultforums.com, which led to discussion about the state of Chaos Magic, and ultimately, the creation of the Linking Sigil. This sigil was then experimented with by others, primarily in locations of interest where people were looking for answers. These tags form the basis of the LS Network.

Eventually the Marauder Underground formed from the core group of practitioners who used the LS. At this point in time, a change began to be noted in LS, as she began to turn into an egregore, Ellis. She would appear to people as a middle-aged, redheaded woman. Also during this time was the creation of the Ellisian generators, Ellisian Tower, and some servitors.

In 2006, there was enough interest in reinvigorating the project, so Sheosyrath wrote "Occultus Conturbo," and created the Doombringer godform.

On July 17, 2007 the **Chelsea Working** was performed by three Marauders, each situated at a different point— Karma Mitchell in California, Sheosyrath in Texas, Damien Horizonstar in Maryland, and Alysrose in New York City, on the roof of the Chelsea Hotel in Manhattan. The ritual released a floodgate, and the resulting project was coined the Domus Kaotica because of its focus on Khaos, and a new current. The deathbylollipops (DBL) forum was created, and eventually the name DKMU stuck.

Operation Virus kicked off in 2008, with marauders tagging the LS, creating youtube videos like "warbringer," and other guerrilla articles, poetry, fliers, and stickers all over the online community and anywhere they could easily be placed. Around this time was the creation or discovery of the godforms Ino, Trigag, and Zalty. Also occurring this year, was the release of "The Assault on Reality: A Field Manual for the Strange Psyche."

In 2009, “The Media Magician” video was released, and a DKMU Way-House in NJ was established. It served as a meeting hall for members to meet, and perform rituals. The next year the good work continued, leading to the discovery or creation of the Red King, the White Queen, and Coniunctio. Around this time, things began to slow down.

2011 saw the final meet in Pennsylvania, with marauders coming from all over the United States, and one even from the United Kingdom. A ritual was performed as a group, using these entities: Ellis, Ino, Trigag, Zalty, Red King, and White Queen.

Despite numerous attempts by hackers to stop LS, she still spreads, and the Marauders still stand strong. In 2012 DBL died, and was over-run by bots. At the same time the A.A.O. was formed, and released the first edition of Liber Sigillum. In DBL’s place, we have created DKMU.ORG, a home for a second revival.

We hope that all who have interest will take part in this second revival. The assault on reality lives on.



INTERMISSION

THE TIME HAS
COME!



THE WALRUS SAID



DEPH'ETH

BEK'ETH

NIX'ETH



--GODFORMS--



Figure 1: The Ellis / Linking Sigil



Figure 2: The Sigil of 663 / The Doombringer



Figure 3: The Sigil of Ino



Figure 4: The Sigil of Trigag

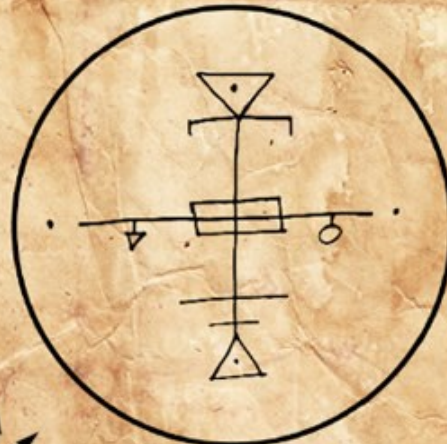


Figure 5: The Sigil of Zalty



Figure 6: The Red King Sigil

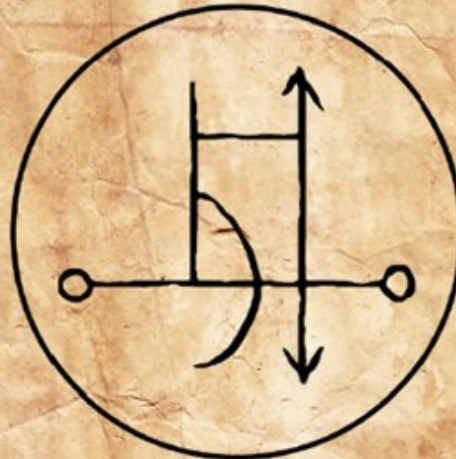


Figure 7: The White Queen Sigil

The DKMU Godforms (Without Conjunctio)

A.A.O.

The A.A.O. has done a review of the DKMU godforms in Liber Sigillium. An excerpt can be found [here](#). Further information on the A.A.O. can be found in the A.A.O. Handbook.

--LS--

“The “LINKING SIGIL” is a simple sigil we use to link our works in this endeavor together. It works rather like a spell header, we begin with that and then we slap whatever else we’ve got around it. That way we would be working in conjunction, but also manage to maintain our autonomy and unique spellcasting style, making our overall effect more diverse and interesting.

One doesn’t even have to use it in conjunction with any spell in particular at all, it can simply be used as a means of bringing places of power, or places of particularly creative energy into the web. The only point of the linking sigil is to form a magick net, all working to increase the levels of magick in the world, like a giant spell that evolves and grows each time we add to it
t i l l e v e n t u a l l y . . .

Think outside of the box, the more creative we are with the application of this sigil, the more wonder and weirdness we can rope to the cause, the better. Whatever magick you use in conjunction with the Linking Sigil becomes another piece of the puzzle, whatever place you tag becomes another node.”

-taken from the original MU site

--LS vs. ELLIS --



LS

- used as a spell header with a variety of other sigils
- consists of a web of energy
- energy must be given to be received
- spider symbolism
- physical locations often become haunted
- sigils, workings, & tags become nodes in the web

ELLIS

- known as the red queen, with three aspects: child, lover, & crone
- alice in wonderland symbolism
- known to have a fiery personality
- seen as a red-head
- often encounters are surrounded by injuries such as broken fingers

--SYMBOLS & CATCH PHRASES--



The Atomsphere- this represents infinite nothing (the chaos star), that gives birth to finite everything (the atom)

Big Toe- a nonsensical code with deeper meaning

156/663- the chaos magic and doombringer current

Union for Iconoclastic Freedom Fighters

The Walrus must have oysters!

Drink your grape juice, youngins!

Khaos provides

Beauty. Variety. Conflict.

Black trigag > god

I am that I am not

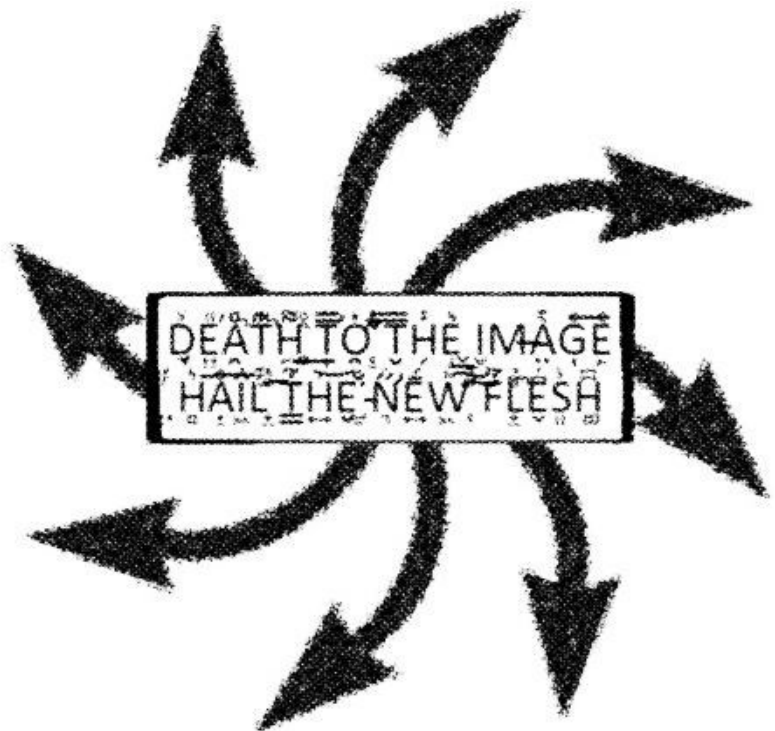
Welcome to yourself

The assault on reality

Pull Your Own Trigger!

Feast and fire

DTI:HTNF- Death to the image, hail the new flesh



--OPERATIONS--

- **Virus:** The distribution of fliers, tagging, stickers, and the proliferation of DKMU material. The most efficient way to fulfill this mission is a MP, or Mischief Pack. The contents of the MP should include tape, spray paint, chalk, a knife, flashlight, fliers, wheat paste, and any other materials one may find useful.

- **Glamourbombing:** Random acts of magic. You can find a guide [here](#).

- **Feast & Fire/The Manifestation of Glory (TMOG):** A one year operation for the purpose of physical, mental, and spiritual attainment. It consists of daily goals, including exercise, diet, detox, and practice. More can be found in **The Assault on Reality**, on page 220.

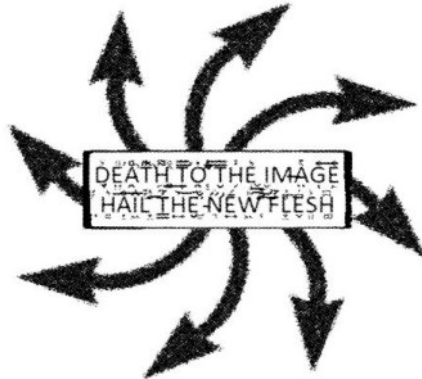
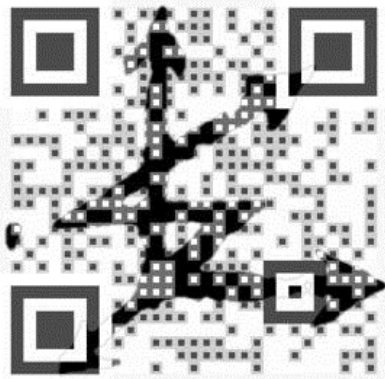
- **Wizards Game:** An idea originating with Arjil and Silenced, of a RPG done in a way that it tricked people into using real magick, through an Awakening. The purpose was to increase belief, weakening consensus reality.

**AND UPON
THIS MARK**



**I UNITE
THE WORLDS**

--PROPAGANDA--

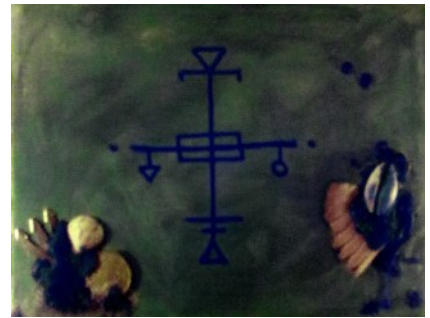


Find more in the
media section of
WWW.DKMU.ORG

**AND UPON
THIS MARK**



**I UNITE
THE WORLDS**



Abandon reality, all
ye who enter here.



--ARCHIVE & LINKS--

The original "[wrap sheet](#)" on LS and her creation from the original Occult Forums

Some of the DKMU history and [information](#) on the current

[Working with the Ellisian Network](#)

A digital copy of [Khaos Magick & Urban Shamanism](#)

A digital copy of [The Assault on Reality](#)

A digital copy of [Occultus Conturbo](#)

[Khaos for None & All](#)

[Warbringer](#) & [The Media Magician](#) (videos)

An [Interview](#) with Frater E.S. (a.k.a. Alysrose)

These documents are all available on www.scribd.com as well

